

Mission: Home to the Montana Geriatric Workforce Enhancement Program (MGWEP), MTGEC is an interdisciplinary center that provides education, training, and support to older adults, family caregivers, direct care workers, healthcare professionals, students, family medicine residents, faculty, healthcare systems, and communities in a variety of settings across Montana to better meet the health needs of its older residents.

Primary Care Partners:



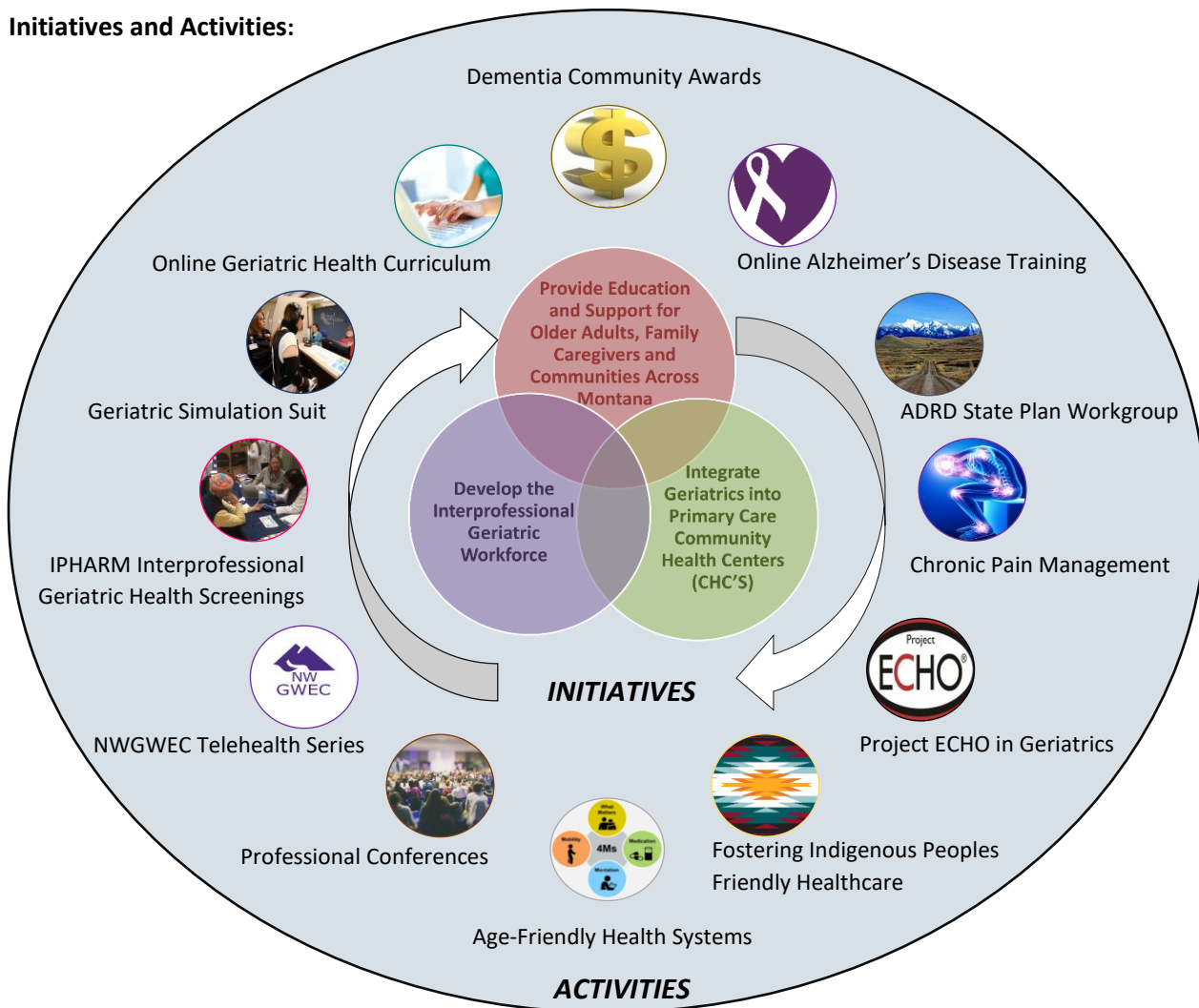
Collaborators:

Alzheimer’s Association – MT Chapter
 Dementia-Friendly Missoula & Billings
 MT ADRD State Plan
 MT Office of Rural Health – AHEC’s
 St. Vincent Healthcare
 NW GWEC
 Wyoming Center on Aging

Missoula Aging Services (AAA)
 Missoula City-County Health Dept.
 Montana Gerontology Society
 Montana Health Care Association
 Mountain-Pacific Quality Health
 Montana State University Extension
 Montana Tech, Nursing Department

University of Montana College of Health
 ▪ Pharmacy Practice Dept.
 ▪ School of Public & Community Health Sciences
 ▪ School of Social Work
 ▪ School of Physical Therapy & Rehabilitation Sciences
 ▪ Western MT Family Medicine Residency Program

Initiatives and Activities:



MTGEC collaborated on many organizations to provide education and services. Some activities were cut short with the arrival of the COVID-19 pandemic in early 2020. Where possible, activities were switched to online methods of presentation. Below are examples of the activities and projects that MTGEC collaborated with throughout the state.

INITIATIVE 1. INTEGRATING GERIATRICS INTO PRIMARY CARE

Clinical Partners- RiverStone Health in Billings and Partnership Health Center in Missoula



Staff Training in Geriatrics



Implementing/Expanding Medicare Annual Wellness Visits



Both CHC's are Implementing a Fall Risk Assessment Program



Introducing Age-Friendly Healthcare Framework

INITIATIVE 2. DEVELOPMENT OF THE INTERPROFESSIONAL GERIATRIC WORKFORCE

352	13 Events* 94 Students	221 Students 24 Faculty	2 Courses 314 Completers
2019 Dementia Continuum Conference Participants	IPHARM Geriatric Health Screenings Student Trainees-PT, RN, RPh	Fall 2019 UM Student Geriatric Interprofessional Seminar	Free Online Alzheimer's Training
			
Spring 2020 8 Sessions/ 214 Participants	Spring/Winter 2020 (2) 10-Week Sessions/ 93 Participants	Collaborated on Geriatric Presentations at MT Health Professions Conferences	Online Geriatric Health Curriculum 34 Participants/189 Courses Completed

*IPHARM events paused in March due to COVID-19

INITIATIVE 3. EDUCATION TO SUPPORT ADULTS, CAREGIVERS AND COMMUNITIES

313	208	33 Participants	25 Participants
IPHARM Pharmacy Patient Contacts	Geriatric Health Screening Patient Consultations	Powerful Tools for Caregivers in Collaboration with MSU Ext. & Area Offices on Aging	Community Health Worker Collaboration with MSU Office of Rural Health
	11 Community-focused awards reached:	136 participants	
	5 Staff-focused awards reached:	80 participants	

Dementia Community Awards provided funding to community organizations, area agencies on aging, home health agencies and other entities to support dementia awareness, education and caregiver support in communities across the state.

HRSA Funding: U1QHP28733, \$3,750,000, July 1, 2019-June 30, 2024-100% federally funded. This publication is supported by the Health Resources and Services Administration (HRSA) of the U.S. Department of Health and Human Services (HHS) as part of an award totaling \$3,750,000. The contents are those of the program and do not necessarily represent the official views of, nor an endorsement by HRSA, HHS or the U.S. Government.